



# NATURAL PATTERNED PVDF

kam pin industrial (HK) ltd.

architectural coating specialist

metal fabrication







# KP

**Kam Pin Industrial (HK) Ltd.**  
Architectural Metal Fabrication & Coating Application

[www.kampin.com.hk](http://www.kampin.com.hk)

@KAMPINLTD

# NATURAL PATTERNED PVDF COATING

---

Introduction	3
Development Process	6
Stonium	7
Terrium	12
Timbrium	17
Metalium	23
Projects	29

# INTRODUCTION

Buildings all over the world have been decorated with all types of natural materials. Natural materials can make a building look unique in color, texture and appearance. Materials like stone, terracotta, wood, or aged metals make for popular options in creating a unique building.

Although these materials bring character to a building, they have their disadvantages. They can be costly, have size limitations, weight limitations, and short product life. Many aspects of the project needs to be considered when using natural materials; such as the material cost, overall building load, production feasibility, production lead time, installation time and installation cost. These factors can be a disadvantage when using natural materials.

Natural Patterned PVDF (NPP) coating is a coating system using PVDF paint on aluminum panels to replicate any natural material's pattern and appearance with the same capabilities of aluminum panels with regular PVDF coating.





Taiping Finance Tower, Shenzhen









# DEVELOPMENT PROCESS

The replication process starts by choosing a targeted material for a building's facade or decorative cladding. Our pattern engineers dissect and gather all the information from the targeted material; such as the patterns (modeling), colors and textures. Once this information is acquired, our engineers can completely customize the finished coating to your requirements.

The patterns (modeling) can be customized by adding patterns, subtracting patterns, or altering the modeling's size.

The colors of the coating can match the target material or can be changed to achieve an entirely different visual effect.

The texture of the finish can be customized to achieve a sand textured finish or a glossy finish.

The coating application process is half automated and half manual to achieve a non-repetitive pattern from panel to panel. Each panel is coated to have it's own unique pattern to achieve a natural appearance and contrast, but panels can also be designated with a specific coating pattern to achieve a required aesthetic.

Natural Patterned PVDF coating is a great way to create alternative materials to achieve natural appearances.

# STONIUM PVDF COATING

Stone is popularly used for exterior facades, but it can have its disadvantages. Natural stones can also have limitations in supply, size, and aesthetics.

Supplying large quantities of stone can be difficult, the quarries that stone come from may not carry enough stone for a large scale project. Stonium panels are mass produced, supplying any amount of panels for your project.

The weight of stone limits the size of stone panels used on a facade. Stonium panels can lighten the panel's weight, there for freeing up the size limitation to achieve a desired design. The weight of aluminum panels also lightens the entire buildings load, saving costs of material and installation time.

Natural stone can have it's limitations on appearance. The patterns and modeling on natural stone is uncontrollable, making the sourcing of stone with specific patterns very difficult and expensive. The modeling on Stonium coating can be controlled and altered to achieve a desired appearance.

Stonium PVDF coating can resemble natural stone 90% in likeness. Stonium panels are often used along side natural stone panels, using natural stones on lower levels and Stonium panels on higher levels. Stonium PVDF panels help you achieve your design economically and sustainably.







Stonium Panels

Real Stone  
Panels

Taiping Finance Tower, Shenzhen

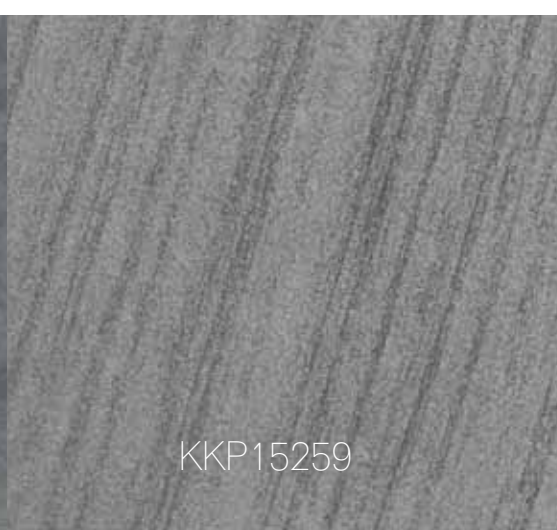




KKP180082



KKP17403S-1



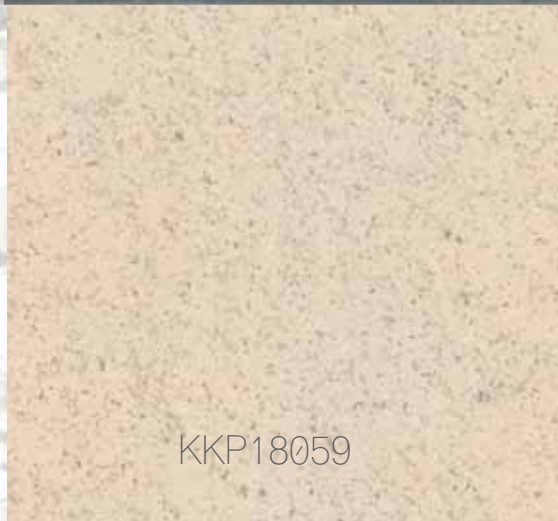
KKP15259



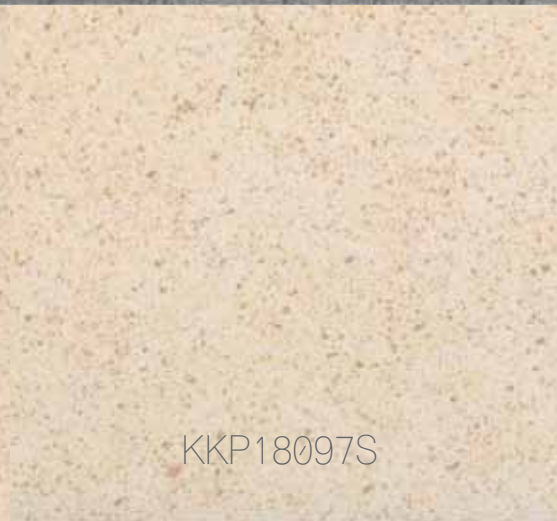
KKP17458S



KKP16440



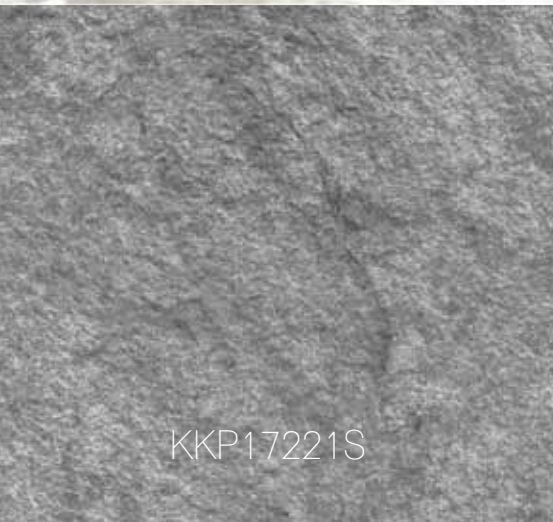
KKP18059



KKP18097S



KKP18124S



KKP17221S



KKP17222S



KKP18086



KKP16254S





KKP18336S



KKP18007



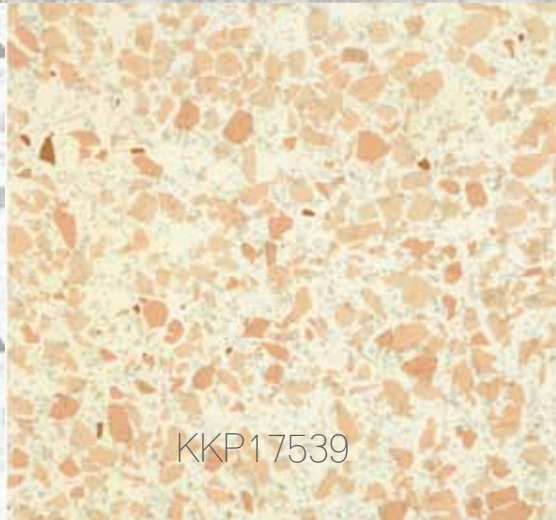
KKP17220S



KKP14442S



KKP17541



KKP17539



KKP16450



KKP18054

# STONIUM PATTERNS







# TERRIUM PVDF COATING

Terracotta is a clay-based, unglazed or glazed, ceramic product often used as a feature on a building's facade. It brings to the table beautiful colors with great textures, but it has limitations; it is heavy, brittle, costly and has size limitations.

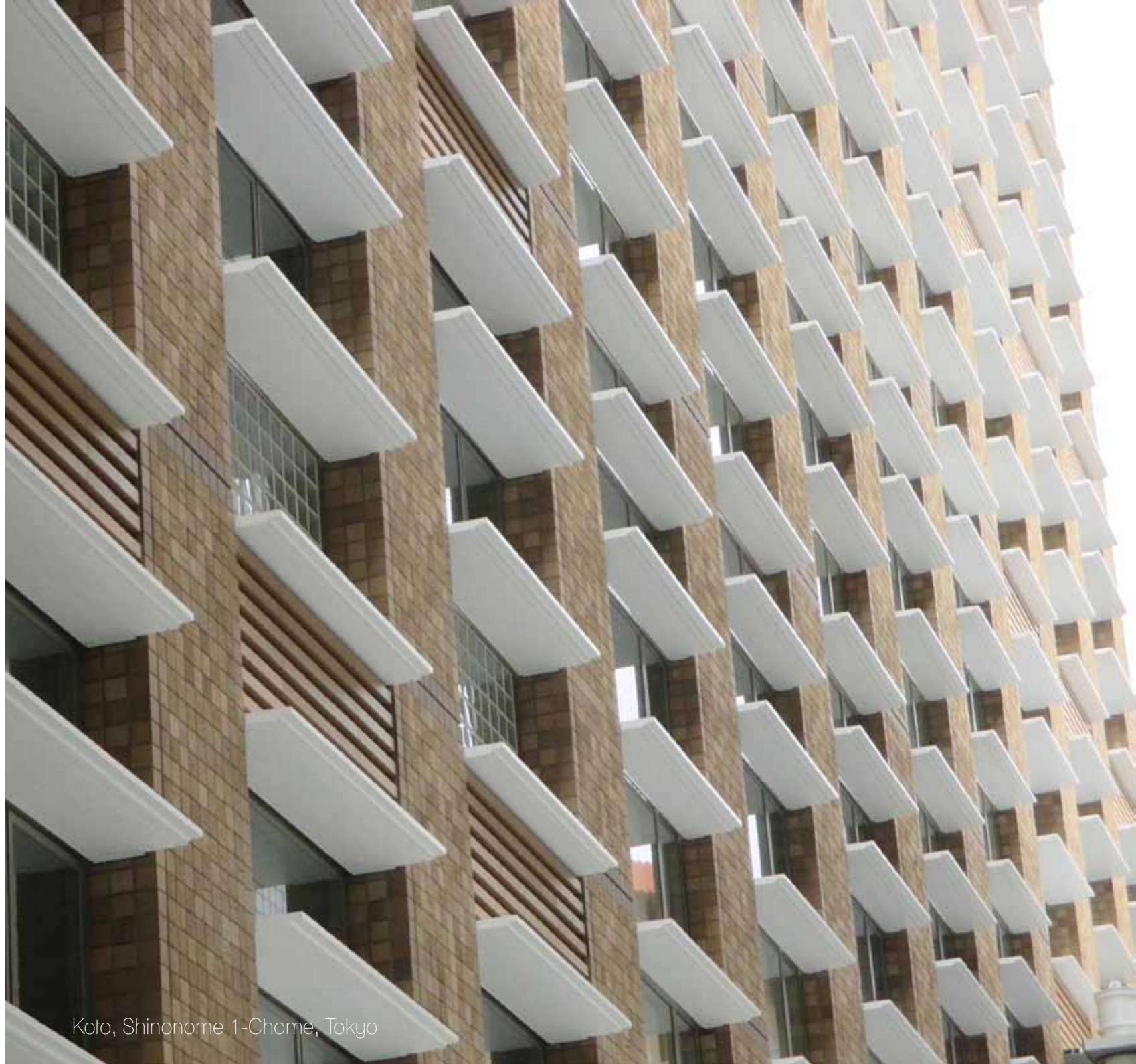
Terrium PVDF coating looks and feel 100% like Terracotta. Terrium PVDF coating brings together the aesthetics of real Terracotta and the longevity of Kynar 500 PVDF coating. This coating system can be applied on to aluminum extrusions, aluminum formed panels and other aluminum products. Terrium PVDF coating can be applied onto any size and shapes of aluminum products, avoiding the production limitations of real terracotta. Terrium panels are light weight and strong; resulting in faster installation and avoiding the risk of cracking or chipping.

Terrium PVDF coating can replicate textures, colors and patterns of real Terracotta with an extremely convincing finish, making it the best alternative product to Terracotta.




Tokyo Takushoku University Phase 3 Building





Koto, Shinonome 1-Chome, Tokyo



KKP14396S

KKP17187S

KKP17487S

KKP16433S

KKP16311S

KKP17165

KKP15423

KKP18139S-1

KKP18137S-1

KKP18138S-1

KKP14395

KKP17187





KKP17486S

KKP17011

KKP17186

TERRIUM  
PATTERNS

# TIMBRIUM PVDF COATING

Wood is material that is widely used in architectural design, but has its disadvantages; it is biodegradable, has size limitations, quantity limitations....etc. There are many products in the market that replicate wood, but they are highly repetitive, limited in patterns, and not suitable for exterior use.

This coating system can be customized to achieve a desired effect. The wood grain patterns can be altered by our graphic engineers; wood grains can be adjusted to be thicker or thinner, the colors can be changed, and the textures can be altered to have a rough, gloss or grain textured finish. The wood patterns can also be graphically altered to minimize repetition from panel to panel.

Timbrium PVDF coating uses Kynar 500 PVDF paint because PVDF paint has a high UV protection, allowing the coating to withstand from color fading, chalking and peeling off. This gives Timbrium an advantage over the market's existing alternative wood products.

Timbrium PVDF coating is a great alternative product for natural wood facades. Used commonly for exterior facades and features, Timbrium coating can help achieve your desired design more economically and sustainably.





美家®

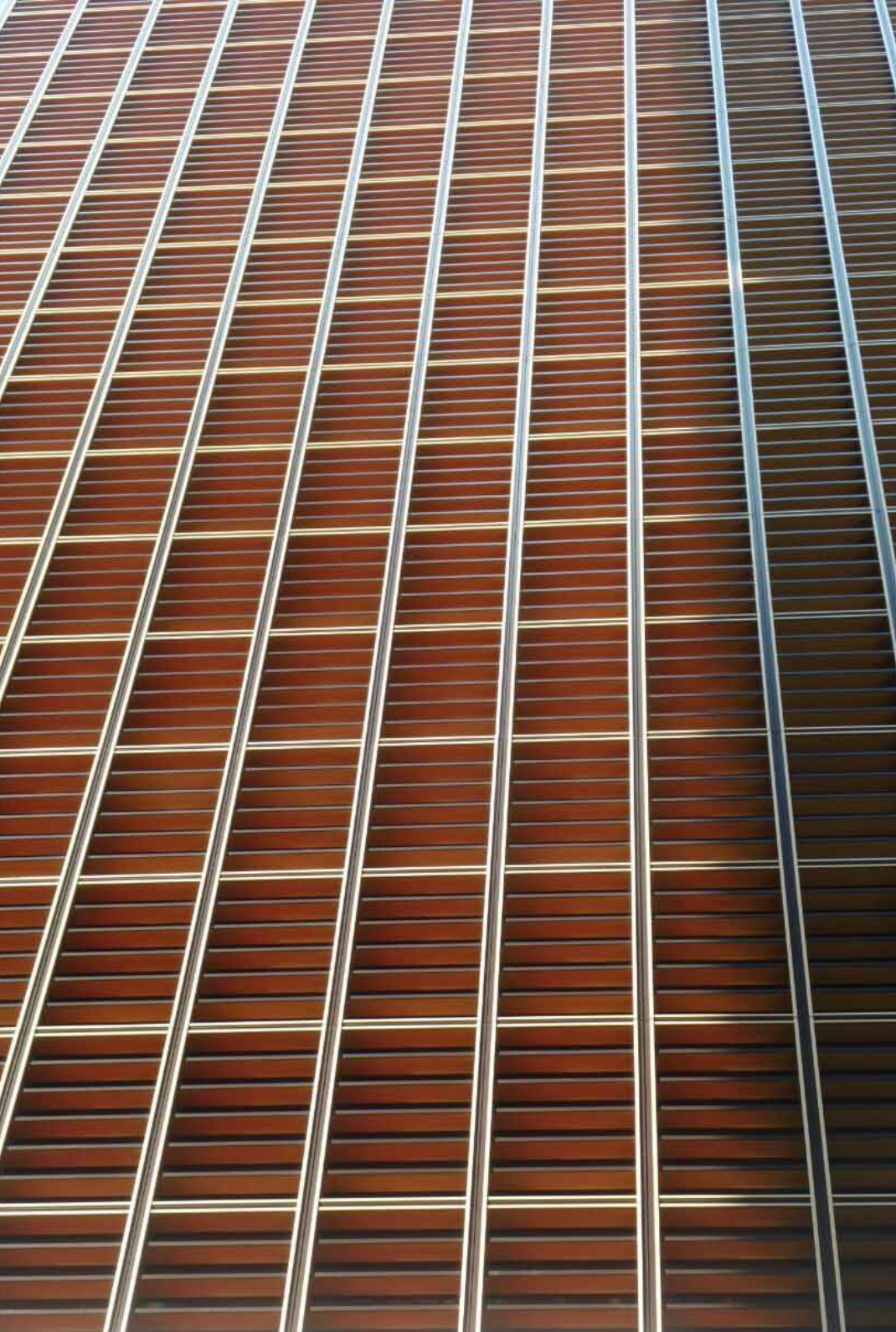
Canadian  
Pine  
Wirebrush  
9392WB





Cartier Building, Ginza, Tokyo





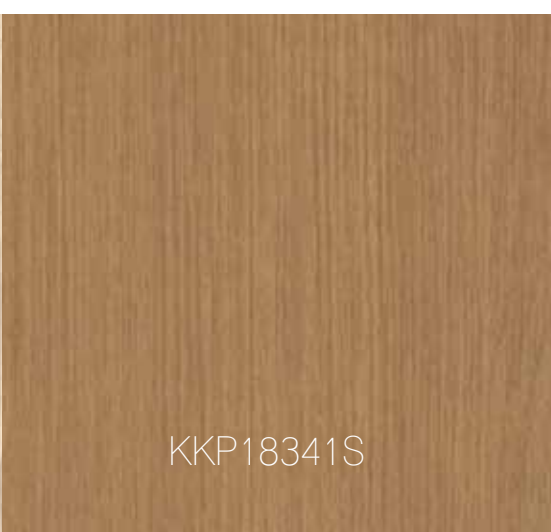
Cartier Building, Ginza, Tokyo



KKP16451



KKP18342S



KKP18341S



KKP17448



KKP18343S



KKP17249



KKP16276



KKP15405S



KKP17248



KKP18179



KKP17560







KKP17561

KKP17559

# TIMBRIUM PATTERNS







# METALLIUM PVDF COATING

There are a wide variety of metal materials that are popularly used for building facades. Among these metals are specially aged metals; for example corten steel, aged silver, patina copper....etc.

These types of finishes come from a corrosion effect, causing the metal to change color and texture through oxidation. Although beautiful and unique, this type of material runs the risk of continuous oxidation that can change the facade to an unwanted color or pattern. In worst case scenarios, the oxidation can eat away at the material and create large holes in the facade.

Metallium PVDF coating can replicate aged or corroded effects with Kynar 500 PVDF paint without the risk of further corrosion. PVDF paint is extremely resilient to UV exposure, preventing color fading, chalking and paint peel off. This makes Metallium PVDF panels an easy to maintain and clean product.

Metallium PVDF can replicate a wide range of aged metals; such as aged silver, corten steel, patina copper, and any other types of aged metals.

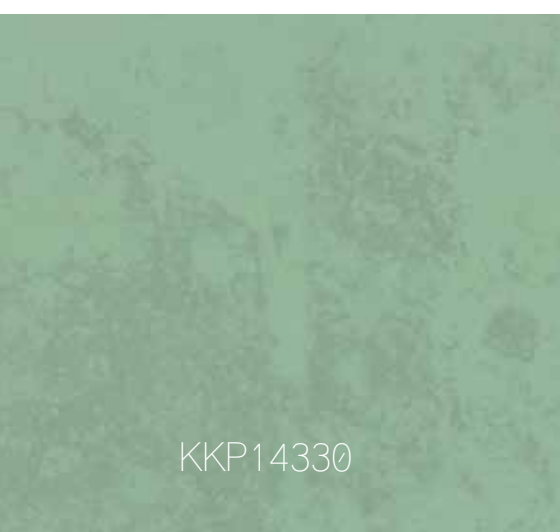




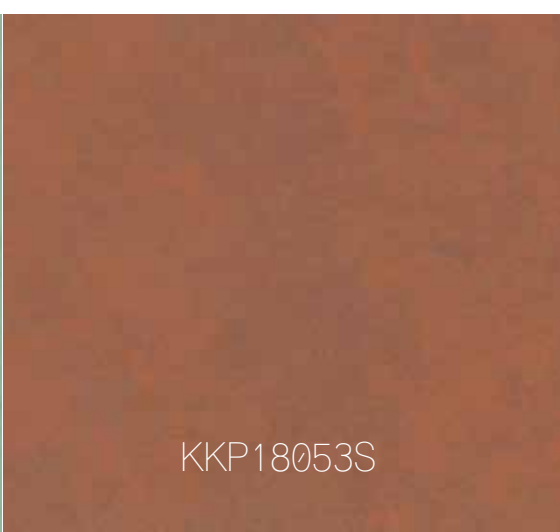
Dome, Cotai Venetian Parcel 3



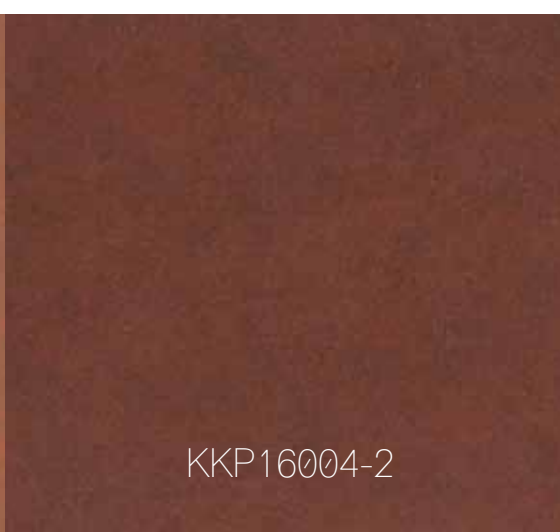




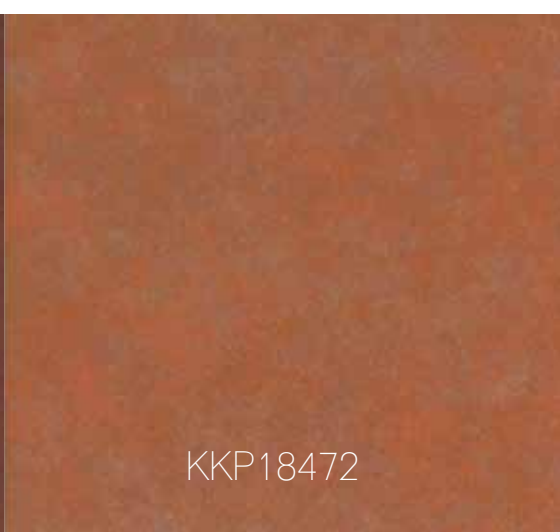
KKP14330



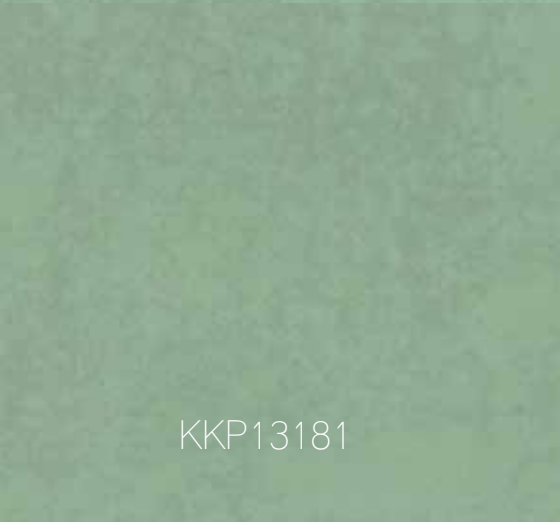
KKP18053S



KKP16004-2



KKP18472



KKP13181



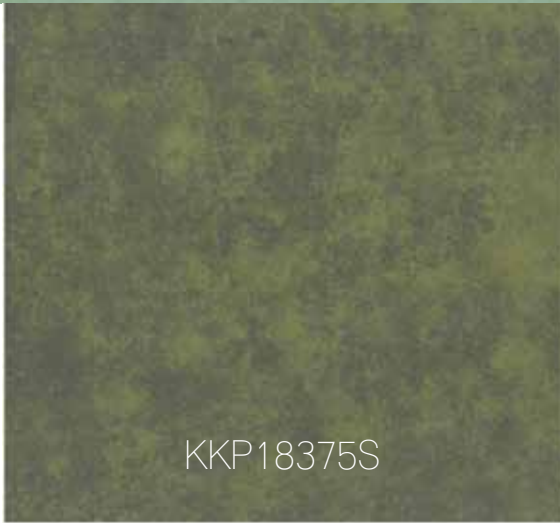
KKP18052S



KKP18470



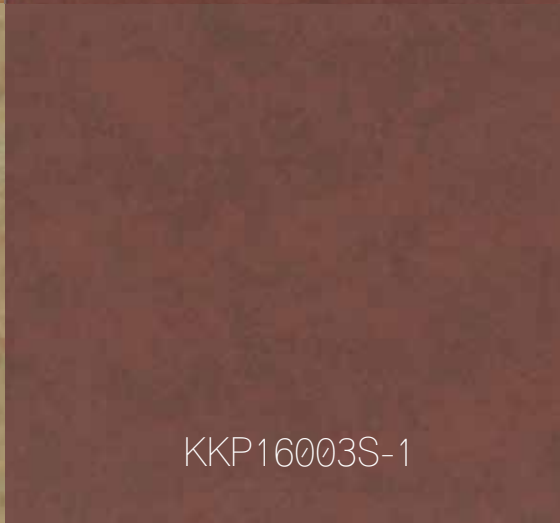
KKP18513



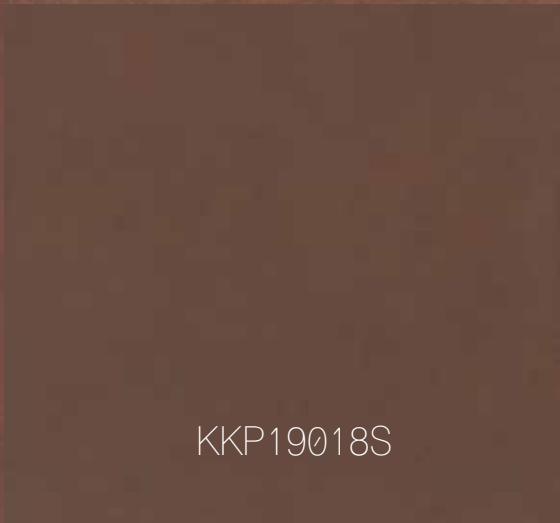
KKP18375S



KKP17555S

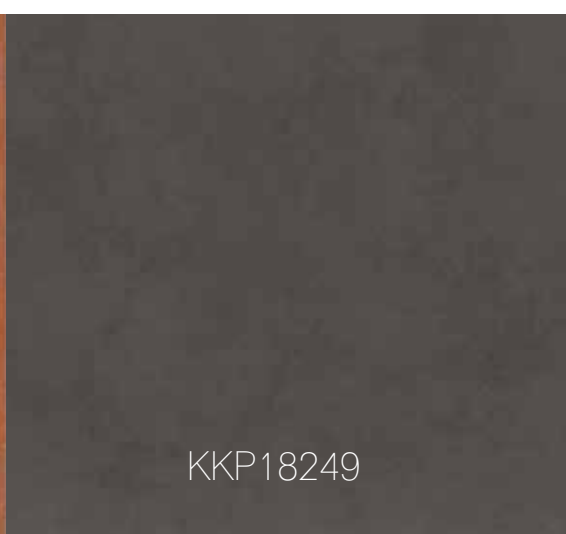


KKP16003S-1




KKP19018S






KKP18249



KKP18121



KKP188346



KKP17421-1

METALIUM  
PATTERNS

				taiping finance tower	shenzhen
				china national gold group building	shanghai
cartier building, ginza	koto, shinonome 1-chome	takushoku university	toyopet tama branch		tokyo
hilton garden inn, mong kok	h2 tower, new world centre, tst	one harbour gate, hung hom	cosmopolitan hotel, wan chai		hong kong
		cotai venetian, parcel 2, 3 dome, 5 & 6	four seasons luxury apartments		macau
			ada fitzgerald retirement community		chicago
			kerry commercial development		qianhai



## Head Office - Hong Kong

---

5/f., Union Industrial Building,  
116 Wai Yip Street, Kwun Tong  
Kowloon, Hong Kong  
Tel. (852) 2342-7988  
Fax. (852) 2341-6082  
kampin@hkstar.com

## Factory - Dongguan, China

---

Shi Xia Industrial District  
Da Long Town, Dongguan  
Guangdong, PRC  
Tel. (86) 769-8318-2828  
Fax. (86) 769-8331-8195  
kampin@21cn.com

## Shanghai

---

Room 1703, OOCL Plaze  
841 Yan An Road (M)  
Shanghai, PRC  
Tel. (021) 6289-3089  
Fax. (021) 6289-8848  
kampinsh@sh163.net

## North America

---

Tel. (647) 963-4223  
Fax. (905) 475-0192  
kampin@hkstar.com

[www.kampin.com.hk](http://www.kampin.com.hk)



@KAMPINLTD



[www.kampin.com.hk](http://www.kampin.com.hk)

 @KAMPINLTD